

Transporters specifications

		5 Ton Steel	5 Ton Aluminum Pioneer	7.5 Ton Steel	10 Ton Steel	15 Ton Steel
Deck	Capacity	10,000 lbs.	10,000 lbs.	15,000 lbs.	20,000 lbs.	30,000 lbs.
	Winch Line Pull (First Layer)	8,000 lbs.	8,000 lbs.	10,000 lbs.	12,000 lbs.	20,000 lbs.
	Width	95" & 102"	95" & 102"	95" & 102"	95" & 102"	95" & 102"
	Length	19', 20', 21'	19', 20', 21'	22', 24'	24', 26', 28'	24', 26', 28'
	Decking Material	5/4" Tropical Hardwood	5/4" Tropical Hardwood	5/4" Tropical Hardwood	5/4" Tropical Hardwood	5/4" Tropical Hardwood
Cab to Axle		19'	120", 124", 126"	120", 124", 126"		
		20'	138"	138"		
		21'	144", 150"	144", 150"		
		22'			138", 150"	
		24'			156", 160", 168"	156" - 168"
		26'				180" - 192"
		28'				204" - 218"
Cab to Tandem		24'			134"-146"	134" - 146"
		26'			158"-170"	158" - 170"
		28'			182"-196"	182" - 196"

Recommended chassis requirements

Minimum GVWR - Gross Vehicle Weight Rating	19,500 lbs.	19,500 lbs.	25,500 lbs.	33,000 lbs.	46,000 lbs.
Minimum RCAGR - Rear Gross Axle Weight Rating	13,500 lbs.	13,500 lbs.	17,500 lbs.	21,000 lbs.	34,000 lbs.
Minimum RBMs - Resistant Bending Moment Total (Both Rails Combined)	1,000,000 in./lbs.	1,000,000 in./lbs.	1,500,000 in./lbs.	2,000,000 in./lbs.	3,000,000 in./lbs.
Frame Height for Optimal Load Angle	31"-34"	31"-34"	31"-34"	34"-39"	35"-42"

* Wheel lift L-arm release pins require occasional lubrication.

** Slide pad contact surfaces require a light coating of clean hydraulic or motor oil ONCE before initial operation.

All equipment capacities specified are based on structural capacity only and comply with SAE J2512 Recommended Practice. Deck capacity is based on an evenly distributed load over the entire deck surface. All measurements and capacities are nominal values.

All outside frame rails extending behind the cab of the chassis must be free of all air tanks, battery boxes, fuel tanks, etc.

The payload and towing capacity of any towing vehicle must meet the following:

- The actual payload on the towing vehicle must not exceed the posted deck rating and, if applicable, the towed vehicle load must not exceed the posted lift / towing ratings.
 - The total weight of the towing vehicle (cab chassis, body, payload, driver, passenger(s), tools, fuel, etc.) and, if applicable, the towed vehicle load must not exceed the GVWR (Gross Vehicle Weight Rating) of the towing vehicle.
 - The total weight of the towing vehicle and, if applicable, the towed vehicle load must be distributed so that each axle's GAWR (Gross Axle Weight Rating) is not exceeded.
 - The total weight of the towing vehicle and towed vehicle (everything that moves with the towing vehicle) must not exceed the GCWR (Gross Combination Weight Rating) of the towing vehicle.
- Staying within these ratings is necessary to maintain the safety and performance of the towing vehicle. Jerr-Dan's authorized sales representatives are available to assist if needed.

Manufactured under various Patents with other Patents Pending.

Specifications, descriptions and illustrative material contained within this literature are as accurate as known at the time of publication, but are subject to change, without notice due to continuous product improvements. Illustrations may include optional equipment and accessories and may not include all standard equipment. Always check with an authorized sales representative or call 800-926-9666 for current information.

Jerr-Dan Corporation, 1080 Hykes Road • Greencastle, PA 17225 • 800-926-9666 • 717-597-7111 • Fax: 717-593-6183 www.jerr-dan.com

Jerr-Dan and the Jerr-Dan logo are registered trademarks. NO-LUBE and STEEL BEAM are trademarks, and Run Hard is a service mark of Jerr-Dan Corporation, Greencastle, PA

INDUSTRIAL ROLLBACK CARRIERS

FEEL THE POWER OF UNCOMPROMISING STANDARDS,
BRILLIANT IDEAS AND EXCLUSIVE TECHNOLOGY



ROCK-SOLID WORKHORSES THAT DON'T BACK DOWN

The Jerr-Dan® family of industrial carriers is the choice for professionals who demand reliable performance, low maintenance and serious muscle. Choose the transporter with the capacity that meets your needs: 5 Ton, 7.5 Ton, 10 Ton, 15 Ton.



BRUTE FORCE. SMART DESIGN. THE HARDEST WORKING FAMILY OF CARRIERS IN THE INDUSTRY.

Jerr-Dan's Industrial Rollback Carriers will change the way you attack the toughest jobs. Engineered and built for the most challenging tasks, these carriers deliver the ultimate in versatility, reliability and performance — all the things you demand in a hard-nosed industrial carrier.

Only Jerr-Dan uses a NO-LUBE™ high performance, replaceable slide pad system to further limit the need for expensive, time-consuming maintenance.

Jerr-Dan carriers last longer and need less maintenance because of Jerr-Dan's exclusive NO-LUBE™ Technology. All major pivot points are greaseless, and plated pins and composite bushings never seize or rust. That means your carrier will save you more down time and money over the life of the vehicle.

These carriers offer the industry's lowest load angles. Plus, the aluminum Pioneer carrier uses STEELBEAM™ Technology that delivers less deflection than any other carriers in their class.

Jerr-Dan's decks, available from 19' to 28' (19' to 21' in aluminum), will stand tall no matter what you throw on them. And, with best-in-class workmanship and paint finish, you'll look good doing it.

Get more out of your next carrier. More capacity. More versatility. More years. With Jerr-Dan Industrial Rollback Carriers.

JERR-DAN
RUN HARD



5 Ton Steel

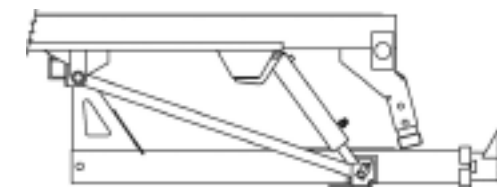
JERR-DAN
RUN HARD

STANDARD FEATURES

- Standard Bolt-On Steel Headboard
- 8,000 lbs. Hi-Speed Worm Gear Winch with Remote Free Spool Release and 3/8" dia x 56' long cable
- W6 x 12 lb/ft Steel Main Deck Beams
- Reinforced Low-Profile Tapered Approach Tip
- Steel Mini-I Beam Crossmembers on 12" Centers
- Steel Angle Flush Style Rubrails with Stake Pockets
- Keyslots: Two at Front, Four at Rear
- Two Chain and Binder Trays Abreast of Winch
- FMVSS Light Group with Wiring Harness and Packard® Weather-Pack Connectors
- Dual Lighted Control Stations with Durable Polycarbonate Placards, Polyethylene Hoods and Polished Aluminum Handles
- Dual Hydraulic Counterbalance Locking Valve on Deck Tilt Function
- Reinforced Rigid Tubular Steel Subframe with No-Lube™ Pivot Joints*
- Full Length Top / Sectional Bottom No-Lube™ High Performance Replaceable Slide Pad System**
- Flexible Nylon Hose / Cable Carrier Tracking System
- Heavy Duty Deck Lock / Hold-Down System
- Adjustable Tilt Stabilizer Bumpers

- Backup Alarm
- Deck and Subframe Painted Black
- Mud Flaps
- Abrasion Resistant / Thermal Resistant Hydraulic Hoses
- Hydraulic Reservoir with Integrated Oil Level / Temperature Gauge
- Hydraulic Supply and Return Filtration
- Chrome Plated Cylinder Rods
- Two Gear Cable Shift PTO with Engagement Indicator Light
- Direct Mount Pump

6" x 6" Pintle Hitch Mtg Plate, Hydraulic Up/Down, Hydraulic In/Out



3,500/7,500 lbs.
All Models

SEE PAGES 7-10 FOR COMPARISON CHARTS OF STANDARD FEATURES AND EQUIPMENT OPTIONS

EQUIPMENT OPTIONS



20,000 lb. Hydraulic Winch with Flapper Plate and 1" D-Ring



Hydraulic Rear Dock Stabilizer



Dual Propane Tank Holder with Locking Chain Racks



Locking Chain Racks on Headboard



Morton Star Traction Plate



5 Ton Aluminum Pioneer*

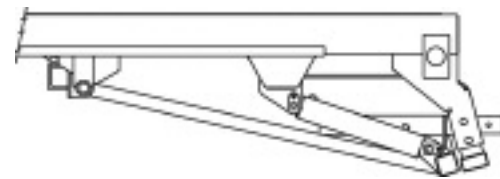
JERR-DAN
RUN HARD

STANDARD FEATURES

- Standard Bolt-On Steel Headboard
- 8,000 lbs. Hi-Speed Worm Gear Winch with Remote Free Spool Release and 3/8" dia x 56' long cable
- Galvanized STEELBEAM™ Technology Deck Subframe with W6 x 12 lb/ft Steel Main Deck Beams
- Reinforced Low-Profile Tapered Approach Tip with Stainless Steel Wear Strip
- Aluminum Mini-I Beam Crossmembers on 12" Centers
- Aluminum Angle Flush Style Rubrails with Stake Pockets – Polished Exterior
- Keyslots: Two at Front, Four at Rear
- Two Chain and Binder Trays Abreast of Winch
- FMVSS Light Group with Wiring Harness and Packard® Weather-Pack Connectors
- Dual Lighted Control Stations with Durable Polycarbonate Placards, Polyethylene Hoods and Polished Aluminum Handles
- Dual Hydraulic Counterbalance Locking Valve on Deck Tilt Function
- Reinforced Rigid Tubular Steel Subframe with No-Lube™ Pivot Joints*
- Full Length Top / Sectional Bottom No-Lube™ High Performance Replaceable Slide Pad System**
- Flexible Nylon Hose / Cable Carrier Tracking System
- Heavy Duty Deck Lock / Hold-Down System

- Adjustable Tilt Stabilizer Bumpers
- Backup Alarm
- Subframe Painted Black
- Mud Flaps
- Abrasion Resistant / Thermal Resistant Hydraulic Hoses
- Hydraulic Reservoir with Integrated Oil Level / Temperature Gauge
- Hydraulic Supply and Return Filtration
- Chrome Plated Cylinder Rods
- Two Gear Cable Shift PTO with Engagement Indicator Light
- Direct Mount Pump

Rear Dock Stabilizer with Reese Hitch Receiver



500/5,000 lbs. 5 & 7.5 Ton
1,200/12,000 lbs. 10 & 15 Ton

SEE PAGES 7-10 FOR COMPARISON CHARTS OF STANDARD FEATURES AND EQUIPMENT OPTIONS

EQUIPMENT OPTIONS



Folding Ladders
(7.5, 10 & 15 Ton Transporters)



8" Crossmember Spacing
(Dual Center Keyslots, Rubrail Keyslots and Wheel Wells Shown)



Over Cab Protector Bucket Rest



Partial and Full Forklift Stops Available (Full Version Shown)



Heavy Duty Low Profile Approach Tip, Standard on All Decks

3



7.5 Ton Steel

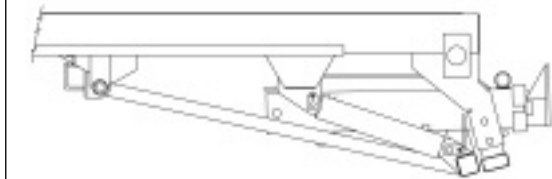
JERR-DAN
RUN HARD

STANDARD FEATURES

- Deluxe Bolt-On Headboard with Screen
- 10,000 lb Hi-Speed Worm Gear Winch with Remote Free Spool Release and 7/16" dia x 56' long cable
- W6 x 16 lb/ft Steel Main Deck Beams
- Reinforced Low-Profile Tapered Approach Tip
- Steel Mini-I Beam Crossmembers on 12" Centers
- Steel Angle Flush Style Rubrails with Stake Pockets
- Keyslots: Two at Front, Four at Rear
- Two Chain and Binder Trays Abreast of Winch
- FMVSS Light Group with Wiring Harness and Packard® Weather-Pack Connectors
- Dual Lighted Control Stations with Durable Polycarbonate Placards, Polyethylene Hoods and Polished Aluminum Handles
- Dual Hydraulic Counterbalance Locking Valve on Deck Tilt Function
- Reinforced Rigid Tubular Steel Subframe with No-Lube™ Pivot Joints*
- Full Length Top / Sectional Bottom No-Lube™ High Performance Replaceable Slide Pad System**
- Flexible Nylon Hose / Cable Carrier Tracking System
- Heavy Duty Deck Lock / Hold-Down System

- Adjustable Tilt Stabilizer Bumpers
- Backup Alarm
- Deck and Subframe Painted Black
- Mud Flaps
- Abrasion Resistant / Thermal Resistant Hydraulic Hoses
- Hydraulic Reservoir with Integrated Oil Level / Temperature Gauge
- Hydraulic Supply and Return Filtration
- Chrome Plated Cylinder Rods
- Direct Mount Pump

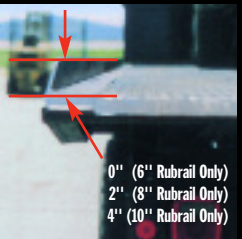
Rear Dock Stabilizer with 6" x 6" Pintle Hitch Mtg Plate, Manual or Hydraulic In/Out



3,500/7,500 lbs. 5 Ton
3,500/12,000 lbs. 7.5 Ton
5,000/20,000 lbs. 10 & 15 Ton

SEE PAGES 7-10 FOR COMPARISON CHARTS OF STANDARD FEATURES AND EQUIPMENT OPTIONS

EQUIPMENT OPTIONS



0" (6" Rubrail Only)
2" (8" Rubrail Only)
4" (10" Rubrail Only)

1/4" x 6", 8", or 10" Rubrail
(Steel Decks Only)



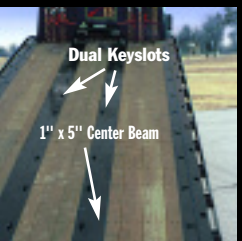
Stationary Deluxe Headboard
(Must Add 6" to CA or CT)



6" Removable Rail



6" Removable Rail Can Be Inserted Into Deck Stake Pockets or Rubrail Stake Pockets (95" Wide Decks Only)



Dual Keyslots Down Center
Dual Keyslots Down Rubrail 2 Rows
Each Side 1" x 5" Center Beam Plate - HD Build Up



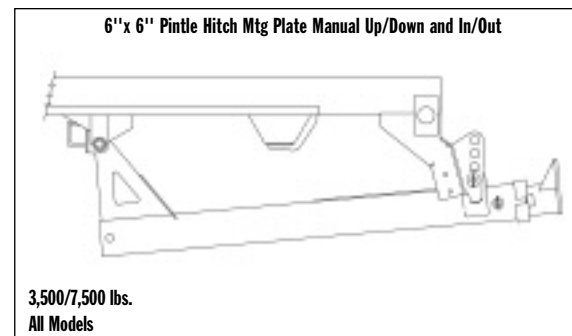
10 Ton Steel

JERR-DAN
RUN HARD

STANDARD FEATURES

- Deluxe Bolt-On Headboard with Screen
- 12,000 lb Worm Gear Winch with 7/16" dia x 56' long cable
- W6 x 16 lb/ft Steel Main Deck Beams
- Reinforced Low-Profile Tapered Approach Tip
- Steel Mini-I Beam Crossmembers on 12" Centers
- Steel Angle Flush Style Rubrails with Stake Pockets
- Keyslots: Two at Front, Four at Rear
- Two Chain and Binder Trays Abreast of Winch
- FMVSS Light Group with Wiring Harness and Packard® Weather-Pack Connectors
- Dual Lighted Control Stations with Durable Polycarbonate Placards, Polyethylene Hoods and Polished Aluminum Handles
- Dual Hydraulic Counterbalance Locking Valve on Deck Tilt Function
- Reinforced Rigid Tubular Steel Subframe with No-Lube™ Pivot Joints*
- Full Length Top / Sectional Bottom No-Lube™ High Performance Replaceable Slide Pad System**
- Flexible Nylon Hose / Cable Carrier Tracking System
- Heavy Duty Deck Lock / Hold-Down System
- Adjustable Tilt Stabilizer Bumpers

- Backup Alarm
- Deck and Subframe Painted Black
- Mud Flaps
- Abrasion Resistant / Thermal Resistant Hydraulic Hoses
- Hydraulic Reservoir with Integrated Oil Level / Temperature Gauge
- Hydraulic Supply and Return Filtration
- Chrome Plated Cylinder Rods
- Direct Mount Pump



SEE PAGES 7-10 FOR COMPARISON CHARTS OF STANDARD FEATURES AND EQUIPMENT OPTIONS

EQUIPMENT OPTIONS



Upper and Lower Work Lights Next to Winch



A Variety of Light Bar Packages (Stop-Turn and Work Light)



S/S Door Tool Boxes
36", 48", 60"



Standard Tri-Axle Subframe for Transporter 28' Decks



Air Shift PTO



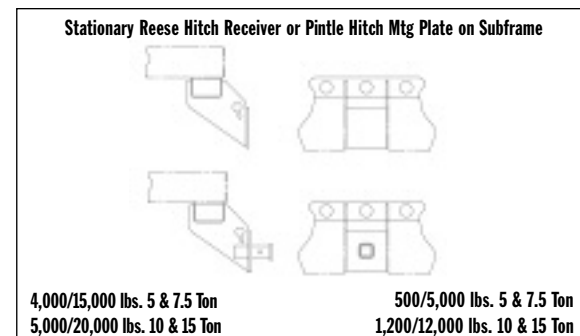
15 Ton Steel

JERR-DAN
RUN HARD

STANDARD FEATURES

- Deluxe Bolt-On Headboard with Screen
- 20,000 lb Worm Gear Winch with Remote Air Free Spool Release and 5/8" dia x 75' long cable
- W8 x 21 lb/ft Steel Main Deck Beams
- Reinforced Low-Profile Tapered Approach Tip
- Steel Mini-I Beam Crossmembers on 8" Centers
- Steel Angle Flush Style Rubrails with Stake Pockets
- Keyslots: Two at Front, Four at Rear
- Two Chain and Binder Trays Abreast of Winch
- FMVSS Light Group with Wiring Harness and Packard® Weather-Pack Connectors
- Dual Lighted Control Stations with Durable Polycarbonate Placards, Polyethylene Hoods and Polished Aluminum Handles
- Dual Hydraulic Counterbalance Locking Valve on Deck Tilt Function
- Reinforced Rigid Tubular Steel Subframe with No-Lube™ Pivot Joints*
- Full Length Top / Sectional Bottom No-Lube™ High Performance Replaceable Slide Pad System**
- Flexible Nylon Hose / Cable Carrier Tracking System
- Heavy Duty Deck Lock / Hold-Down System

- Adjustable Tilt Stabilizer Bumpers
- Backup Alarm
- Deck and Subframe Painted Black
- Mud Flaps
- Abrasion Resistant / Thermal Resistant Hydraulic Hoses
- Hydraulic Reservoir with Integrated Oil Level / Temperature Gauge
- Hydraulic Supply and Return Filtration
- Chrome Plated Cylinder Rods
- Direct Mount Pump



SEE PAGES 7-10 FOR COMPARISON CHARTS OF STANDARD FEATURES AND EQUIPMENT OPTIONS

EQUIPMENT OPTIONS



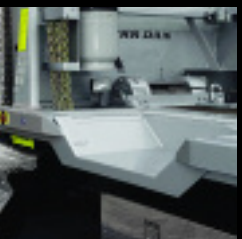
Rear Air Hookup at Tail Light (Hose Not Included)



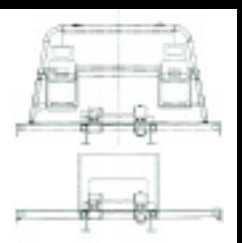
7-Way Plug with Adapter / 7-Round to 4-Flat and 7-Round to 6-Round (Standard with 10 and 15 Ton Tow Options)



Wireless Remote for Optional Winch/Buzz Box Holder (Buzzer Goes Off When Out of Holder)



8" Wheel Wells with Optional Covers



Half Forklift Guard with Propane Tanks

Standard Features

	5 Ton Steel	5 Ton Aluminum Pioneer	7.5 Ton Steel	10 Ton Steel	15 Ton Steel
Standard Bolt-On Steel Headboard	X	X			
Deluxe Bolt-On Headboard with Screen			X	X	X
8,000 lb Hi-Speed Worm Gear Winch with Remote Free Spool Release and 3/8" dia x 56' long cable	X	X			
10,000 lb Hi-Speed Worm Gear Winch with Remote Free Spool Release and 7/16" dia x 56' long cable			X		
12,000 lb Worm Gear Winch with 7/16" dia x 56' long cable				X	
20,000 lb Worm Gear Winch with Remote Air Free Spool Release and 5/8" dia x 75' long cable					X
W6 x 12 lb/ft Steel Main Deck Beams	X				
Galvanized STEELBEAM™ Technology Deck Subframe with W6 x 12 lb/ft Steel Main Deck Beams		X			
W6 x 16 lb/ft Steel Main Deck Beams			X	X	
W8 x 21 lb/ft Steel Main Deck Beams					X
Reinforced Low-Profile Tapered Approach Tip	X		X	X	X
Reinforced Low-Profile Tapered Approach Tip with Stainless Steel Wear Strip		X			
Steel Mini-I Beam Crossmembers on 12" Centers	X		X	X	
Aluminum Mini-I Beam Crossmembers on 12" Centers		X			
Steel Mini-I Beam Crossmembers on 8" Centers					X
Steel Angle Flush Style Rubrails with Stake Pockets	X		X	X	X
Aluminum Angle Flush Style Rubrails with Stake Pockets – Polished Exterior		X			
Keyslots: Two at Front, Four at Rear	X	X	X	X	X
Two Chain and Binder Trays Abreast of Winch	X	X	X	X	X
FMVSS Light Group with Wiring Harness and Packard® Weather-Pack Connectors	X	X	X	X	X
Dual Lighted Control Stations with Durable Polycarbonate Placards, Polyethylene Hoods and Polished Aluminum Handles	X	X	X	X	X
Dual Hydraulic Counterbalance Locking Valve on Deck Tilt Function	X	X	X	X	X
Reinforced Rigid Tubular Steel Subframe with No-Lube™ Pivot Joints*	X	X	X	X	X
Full Length Top / Sectional Bottom No-Lube™ High Performance Replaceable Slide Pad System**	X	X	X	X	X
Flexible Nylon Hose / Cable Carrier Tracking System	X	X	X	X	X
Heavy Duty Deck Lock / Hold-Down System	X	X	X	X	X
Adjustable Tilt Stabilizer Bumpers	X	X	X	X	X
Backup Alarm	X	X	X	X	X
Deck and Subframe Painted Black	X		X	X	X
Subframe Painted Black		X			
Mud Flaps	X	X	X	X	X
Abrasion Resistant / Thermal Resistant Hydraulic Hoses	X	X	X	X	X
Hydraulic Reservoir with Integrated Oil Level / Temperature Gauge	X	X	X	X	X
Hydraulic Supply and Return Filtration	X	X	X	X	X
Chrome Plated Cylinder Rods	X	X	X	X	X
Two Gear Cable Shift PTO with Engagement Indicator Light	X	X			
Direct Mount Pump	X	X	X	X	X

Optional Equipment

	5 Ton Steel	5 Ton Aluminum Pioneer	7.5 Ton Steel	10 Ton Steel	15 Ton Steel
DECK					
Steel Rubrail Overlays (1/4" thick x even with deck, 2" above deck, or 4" above deck)	X		X	X	X
6" Permanent Steel Tubular Raised Rails	X		X	X	X
6" Removable Steel Tubular Raised Rails	X	X	X	X	X
5" Removable Aluminum Angle Raised Rails – Polished Exterior	X	X	X		
Outside Stake Pockets with Rubrail - (95" wide deck only)	X	X	X	X	X
Outside Stake Pockets with Rubrail and Pipe Spools - (95" wide deck only)	X		X	X	X
Steel Mini-I Beam Crossmembers on 8" Centers	X		X	X	
Aluminum Mini-I Beam Crossmembers on 8" Centers		X			
1/8" Diamond Steel Decking Over Wood	X		X	X	X
3/16" Diamond Steel Decking Over Wood			X	X	X
1" x 5" Center Beam Plates			X	X	X
8" Deep Wheel Wells				X	X
Wheel Well Covers				X	X
Partial Width Forklift Stop				X	X
HEADBOARD					
Deluxe Bolt-On Steel Headboard with Screen	X	X			
Stationary Deluxe Steel Headboard with Screen	X	X	X	X	X
WINCH					
8,000 lb Hi-Speed Planetary Gear Winch with Remote Free Spool Release and 3/8" dia x 56' long cable	X	X			
10,000 lb Hi-Speed Worm Gear Winch with Remote Free Spool Release and 3/8" dia x 56' long cable	X	X			
12,000 lb Worm Gear Winch with 7/16" dia x 56' long cable			X		
20,000 lb Worm Gear Winch with Remote Air Free Spool Release and 5/8" dia x 75' long cable				X	
Remote Free Spool Release - (12,000 lb winch only)			X	X	
Wireless Remote Control for Winching Function	X	X	X	X	X
Combination Cable Roller Guide / Tensioner Plate - (8,000, 10,000 & 12,000 lb winches only)	X	X	X	X	
Cable Roller Guide – (20,000 lb winch only)				X	X
Cable Tensioner Plate – (20,000 lb winch only)				X	X
TIE-DOWN					
Various Assortment of D-Ring Combinations Available	X	X	X	X	X
Various Assortment of Keyslot Combinations Available	X	X	X	X	X
Dual 180° Keyslot Strips Down Center of Deck (pair)	X	X	X	X	X
Dual 180° Keyslot Strips Down Along Rubrail (pair)	X	X	X	X	X

Optional Equipment

5 Ton Steel 5 Ton Aluminum Pioneer 7.5 Ton Steel 10 Ton Steel 15 Ton Steel

STORAGE

36" / 48" / 60" long x 18" wide x 18" deep Toolboxes with Stainless Steel Door, Full Length Hinge, Beaver Tail Latch, Rubber Mat and Pair of Mounting Brackets	X	X	X	X	X
Toolbox Shelf	X	X	X	X	X
Door Activated Toolbox Light	X	X	X	X	X
29" long x 24" / 15" wide x 19" deep Storage Baskets with Pair of Mounting Brackets	X	X	X	X	X
Stainless Steel Cover for Storage Basket	X	X	X	X	X

STABILIZER

Includes No-Lube™ pivot joints* and 4-way receptacle for auxiliary tow lights and direct mount hydraulic counterbalance holding valves, if applicable (stabilizer with tow option only)

Hydraulic Rear Dock Stabilizer	X	X	X	X	X
Hydraulic Rear Dock Stabilizer with 2" Reese Hitch Receiver	X	X	X		
Hydraulic Rear Dock Stabilizer with 2 1/2" Reese Hitch Receiver with 2" Reese Adapter				X'	X'
Hydraulic Rear Dock Stabilizer with Hydraulic Extend Pintle Hitch Mounting Plate	X	X	X	X'	X'
Hydraulic Rear Dock Stabilizer with Manual Extend Pintle Hitch Mounting Plate	X	X	X	X'	X'
Hydraulic Rear Dock Stabilizer with 4,000 lb Capacity Wheel Lift with Manual L-Arm or T37 Pivoting Wheel Grids			X	X	X

1 – Tow Options on 10 ton and 15 ton units also include 7-way electrical connector at rear of subframe, 7-way round to 6-way round and 7-way to 4-way flat adapters

PAINT

Custom Paint Colors Available	X	X	X	X	X
-------------------------------	---	---	---	---	---

PTO

Cable Shift PTO			X	X	X
Air Shift PTO	X	X	X	X	X
E-Hydra Shift PTO	X	X	X	X	X
Lectra Shift PTO	X	X	X	X	X
Clutch Shift PTO	X	X	X	X	X

TOWING

WHEEL LIFTS:

Includes No-Lube™ pivot joints*, 4-way receptacle for auxiliary tow lights, built-in safety chains with storage pockets, tie-down strap package, anti-theft L-arm stowage and direct mount hydraulic counterbalance holding valves

3,000 lb Capacity Independent Raise / Lower (IRL) with Manual L-Arm or T37 Pivoting Wheel Grids	X	X	X	X	X
4,000 lb Capacity Independent Raise / Lower (IRL) with Manual L-Arm or T37 Pivoting Wheel Grids			X	X	X
3,000 lb Capacity Zero Degree (ZOD) with Manual L-Arm or T37 Pivoting Wheel Grids	X	X	X		
Ball Hitch Mounting Angle for Wheel Lift	X	X	X	X	X
2" Reese Hitch Receiver for 3,000 lb Wheel Lift	X	X	X		
2" Reese Hitch Receiver with 2" Reese Adapter for 4,000 lb Wheel Lift			X	X	X

Optional Equipment

5 Ton Steel 5 Ton Aluminum Pioneer 7.5 Ton Steel 10 Ton Steel 15 Ton Steel

TOWING

TOWBARS:

Includes 4-way receptacle for auxiliary tow lights, built-in safety chains with storage pockets, tie-down chains and direct mount hydraulic counterbalance holding valves, if applicable (IRL only)

3,500 lb Capacity Independent Raise / Lower (IRL) with Hydraulic Extend / Retract and Rubber Tubes	X	X			
3,500 lb Capacity Manual Raise / Lower with Hydraulic Extend / Retract and Rubber Tubes	X	X	X	X	X
5,000 lb Capacity Independent Raise / Lower (IRL) with Hydraulic Extend / Retract and Rubber Tubes or Keyslots			X	X	X

TOW HITCHES:

Includes No-Lube™ pivot joints*, 4-way receptacle for auxiliary tow lights and direct mount hydraulic counterbalance holding valves, if applicable (IRL only)

Various Hydraulic and Manual Ball Hitch Mounting Plate Configurations / Capacities Available	X	X	X	X'	X'
Various Hydraulic, Manual and Stationary Reese Hitch Receiver Configuration / Capacities Available	X	X	X	X'	X'
Various Hydraulic, Manual and Stationary Pintle Hitch Mounting Plate Configurations / Capacities Available	X	X	X	X'	X'

1 – Tow Options on 10 ton and 15 ton units also include 7-way electrical connector at rear of subframe, 7-way round to 6-way round and 7-way to 4-way flat adapters

LIGHTING

Emergency Light Package - includes Federal Signal Jet Series Rotator or Strobe Lightbar, Pair of Work Lights at Rear of Truck and 3 Function Switch Panel	X	X	X	X	X
Pre-Wiring for Emergency Light Package				X	X
LED Lighting Package	X	X	X	X	X
Work Lights at Rear of Truck (pair)	X	X	X	X	X
Work Lights at Winch (pair)	X	X	X	X	X
Work Lights on Headboard (pair)	X	X	X	X	X
Various In-Dash and Under-Dash Switch Panels	X	X	X	X	X
Magnetic Tow Light Kit	X	X	X	X	X

MISCELLANEOUS

Stainless Steel Wheel Simulators	X	X	X	X	X
Stainless Steel Quarter Fenders	X	X	X	X	X
Jump Start Kit	X	X	X	X	X
7-Way Trailer Plug with Adapters (pre-wired chassis only)	X	X	X	X	X
Air Supply Disconnect at Rear of Truck	X	X	X	X	X
Locking Chain Racks on Headboard	X	X	X	X	X
Propane Tank Holders with Locking Chain Racks on Headboard	X	X	X	X	X
Folding 3 Step Ladder			X	X	X
Partial Width Forklift Stop – (20,000 lb winch only)				X	X
Duplex Pintle Hitch	X	X	X	X	X
Overcab Protector / Bucket Rest	X	X	X	X	X
“On-Demand” Remote Throttle Control (International chassis only)	X	X	X	X	X
Non-Domestic Chassis Electrical Conversion Kit	X	X	X	X	X